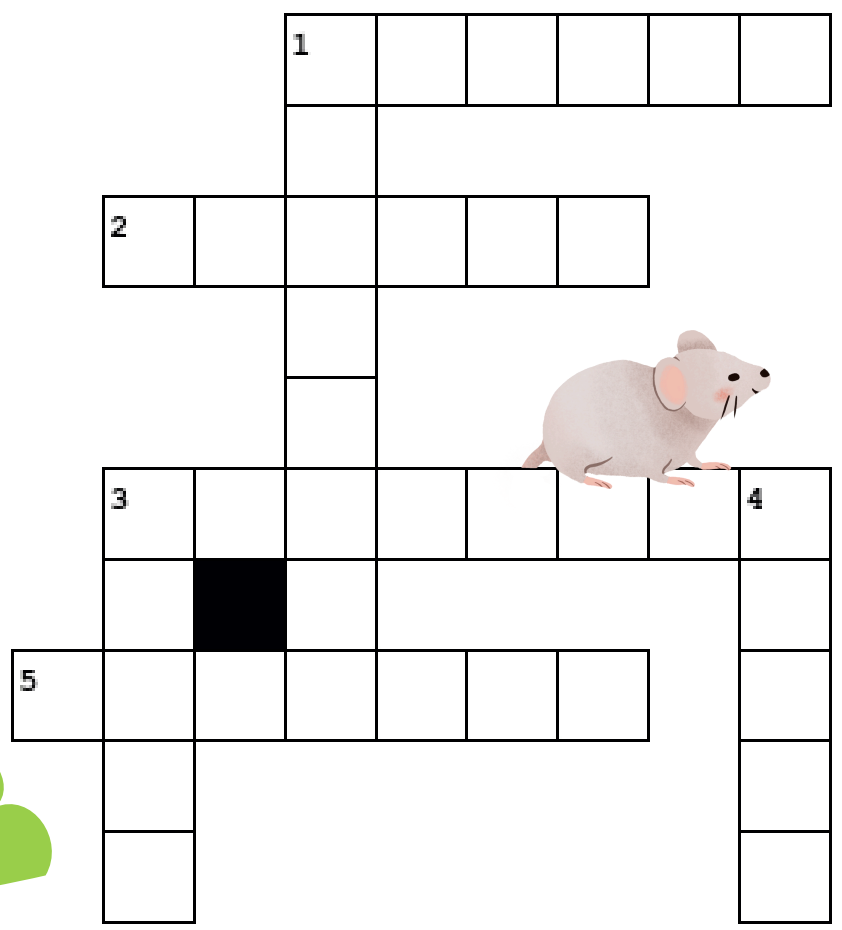
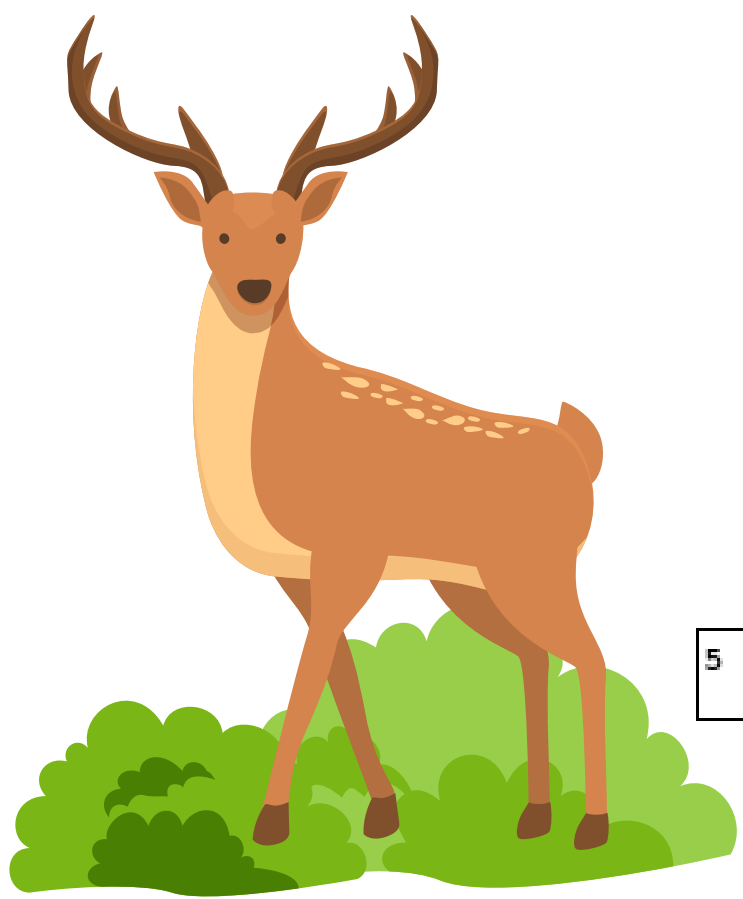




MAMMAL CROSSWORD PUZZLE



DOWN

- 1. I can be found stuffing my cheeks with seeds or grass
- 3. Stinky mammal with black and white stripes
- 4. A beaver's home



ACROSS

- 1. I can be heard howling late at night
- 2. Porcupines are covered in these
- 3. Bushy-tailed rodent, often found up in a tree
- 5. I look a lot like a beaver, but with a rat-like tail